



 **SPIERINGS**
MOBILE CRANES

SK 2400-AT7

TECHNICAL SPECIFICATIONS

SPIERINGS HYDRAULIC FOLDING CRANE

Crane

Mobile crane constructed according to the trolley-tower crane principle, whereby all mounting and dismantling steps are pre-programmed using several PLC which are coupled together with a Profi-bus TM system.

The three-section telescope mast is a solid wall construction made of high-tensile fine-grain steel. Construction and steel grade together ensure the highest possible rigidity and stability. The three-section folding jib has a lattice construction mainly of high-tensile fine-grain steel. Hydraulic cylinders ensure the interlocking of mast and jib, the erecting and telescoping of the mast and the positioning of ballast and counter jib. The mounting and dismantling cycles are fully automatic. The jib is designed to unfold above 17 metres. The construction is designed to allow 10.000 mounting and dismantling cycles.

A John Deere diesel engine, mounted in the upper frame, drives three hydraulic pumps so that the various simultaneous crane movements do not affect each other. This superstructure engine eliminates the need to keep the truck engine running to operate the crane functions. The use of this second engine considerably improves the noise level and fuel consumption. The superstructure includes an in-built 15 KW electrical generator set for the crane lighting and heating. A built-in central lubrication system for the crane. A camera in the trolley. The trolley camera is fitted with a zoom option. The image is displayed on a colour monitor in the crane cabin.

Crane cabin:

- There is a comfortable crane cabin fitted with, among other items, a modern colour touch-screen which shows necessary information for a safe and smooth crane operation.
- A hatch behind the seat gives access to the cabin. The crane cabin can be mounted to the outer mast (cabin height 15.2 m) or to the inner mast (on 2 masts at 27,4 m, on 3 masts at 37,4 m) as required. The height can be adjusted by merely switching one nut. The cabin operator accesses the cabin by means of a hydraulic powered lift. The mounted operator's seat can be adjusted according to weight, has various positions and can be move both lengthways and transversely to facilitate access. Standard accessories in the cabin also include a radio/cd player, an intercom, an electric heater (3000 W), a fire extinguisher and five sun blinds.
- A radio remote control (HBC) to operate the crane.
- The possibility to raise the jib by 30°
- The jib is fitted with four 1000 Watt gas discharge lamps.

SK 2400-AT7

Lifting capacity	: 263 tm
Max. load	: 9000 kg (at 27 m) two rope falls 18000 kg (at 14,6 m) four rope falls
Max. outreach	: 42 m (5500 kg)
Max. lifting height	: 56 m (raised 30°)

Truck

Specially designed truck for optimum torsion rigidity. As a result of the special construction, the maximum lifting capacity can be reached with minimum ballast, thus making extra ballast unnecessary. The truck has hydropneumatic suspension with level control to correctly adjust the truck height when travelling on the road and on the building site (12 cm more ground clearance). The truck has a storage box on the rear. The two-circuit braking system is fitted with drum brakes and a built-in central lubrication system for the truck.

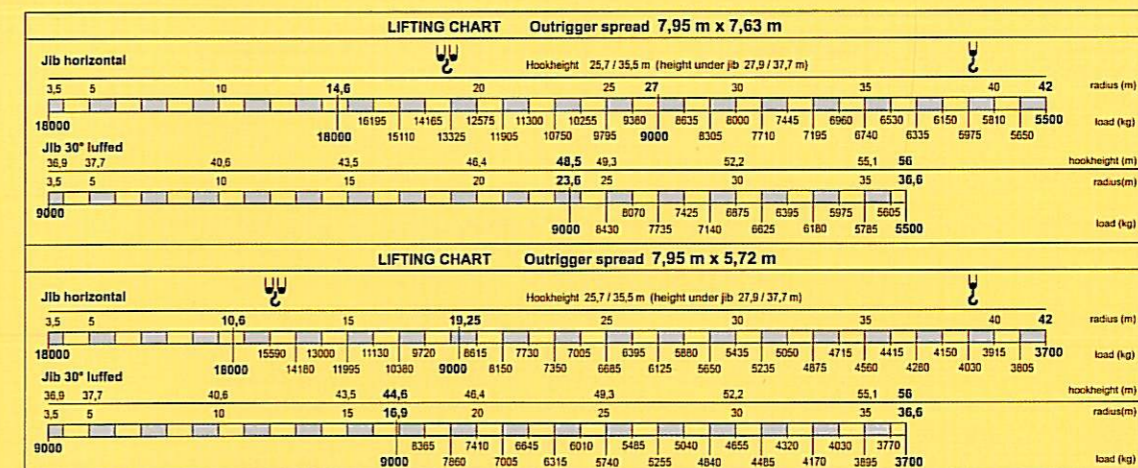
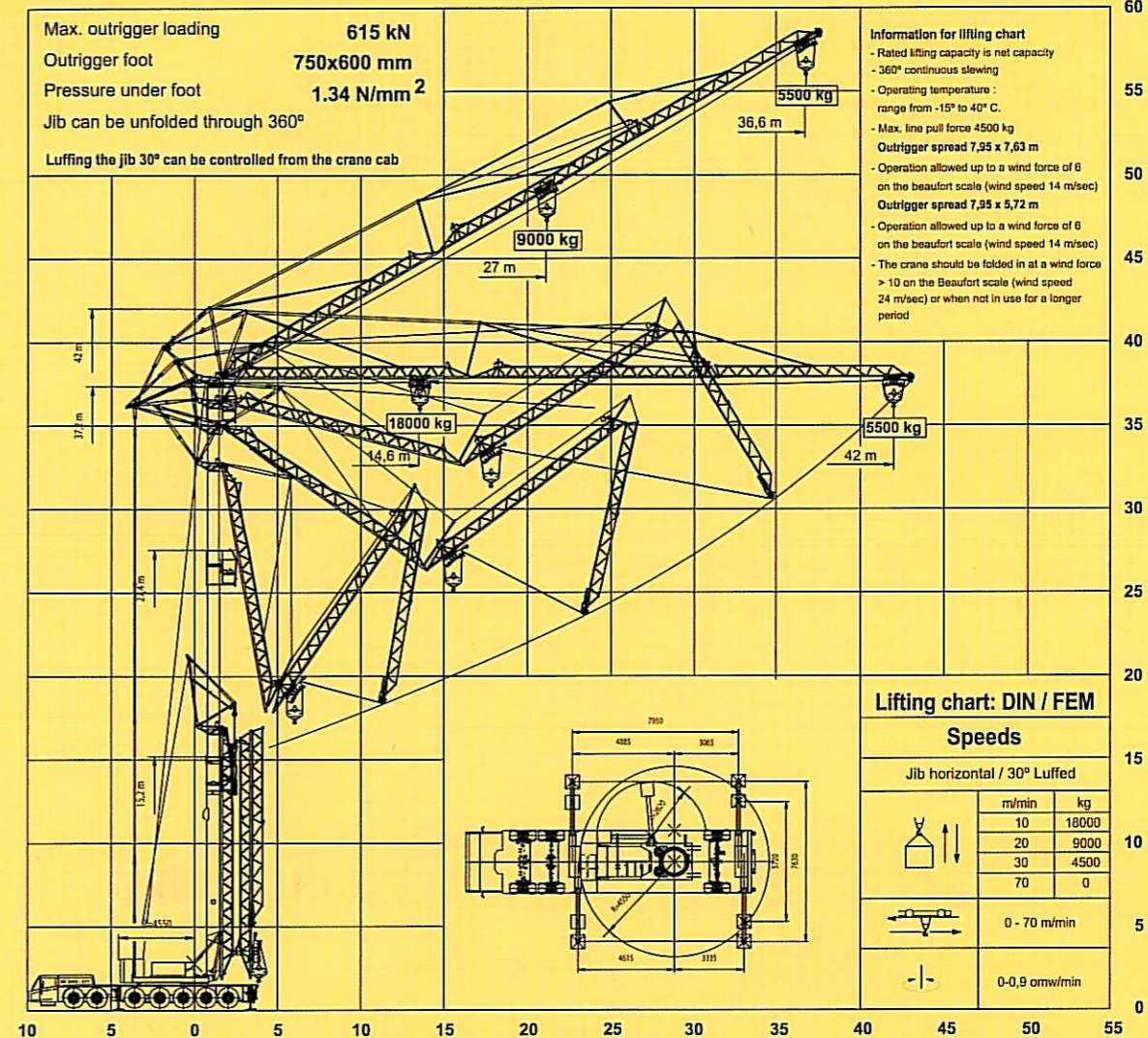
The modern steering system of the truck gives the best manoeuvrability in all situations. The automatic ZF gearbox has built-in retarder to relieve mechanical brakes. Cruise control is also provided. Four steel pads, mounted on the storage box. A supplementary auxiliary-crane is also mounted to lay out the plates.

A rear-view camera system on the truck.

Truck cabin:

Modern steel plate cabin with ergonomic and futuristic design provided with effective rust-resistant primer and finished in high quality Autocolor Turbo top coat. The steel cabin has composite cladding and is mounted direct to the chassis to ensure that it is vibration-free. It includes heated outside mirrors, side view mirror, electrically-controlled windows, heating, air suspension driver's seat, operator friendly and functional semicircular operating/instruments panel with a radio/cd player spacious storage compartments, a 220 Volt socket and an Air-conditioning.

Crane and truck have underground anti-corrosion treatment using a three-layer, two component paint system. First layer: Epoxy primer; second layer Chrome-free Epoxy primer-white; final layer: Autocolor Turbo-plus top coat.



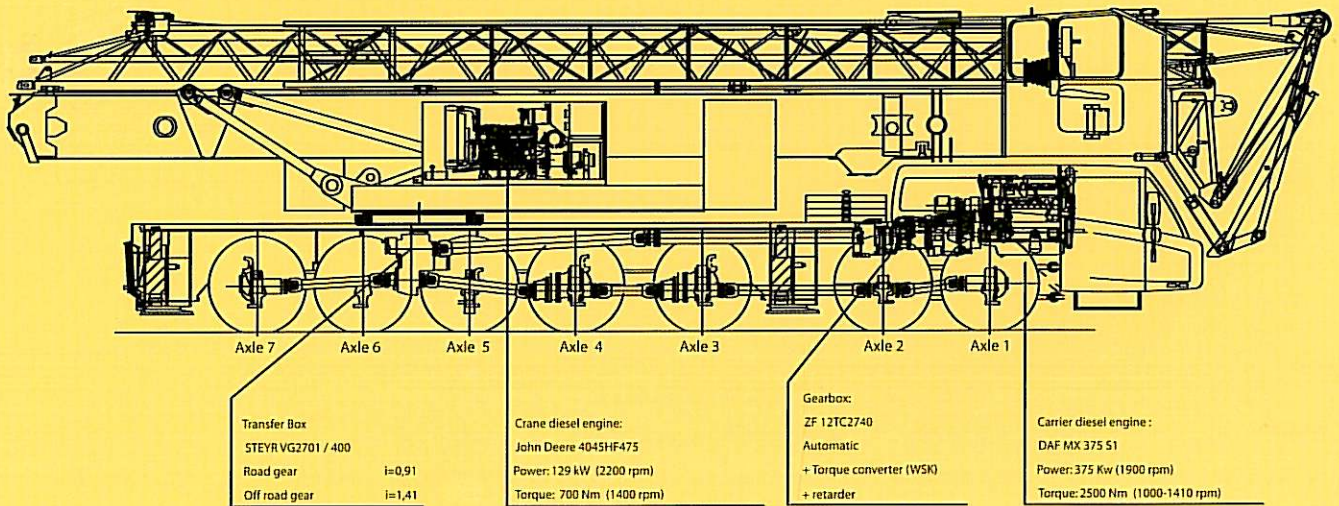
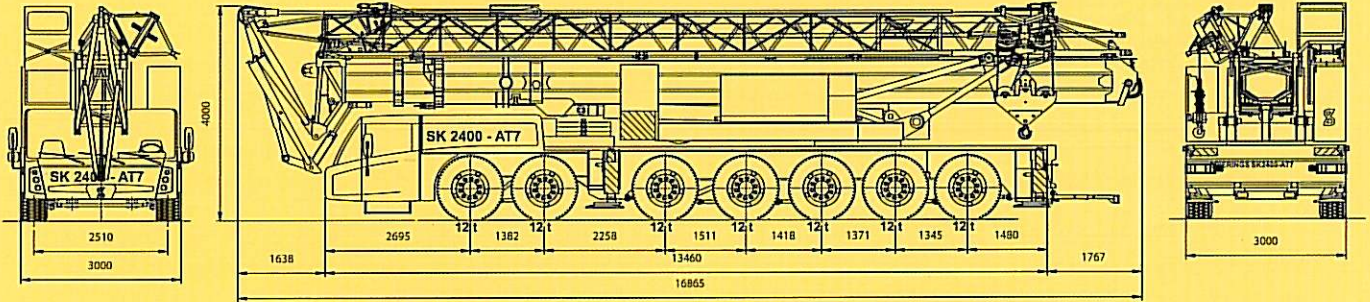
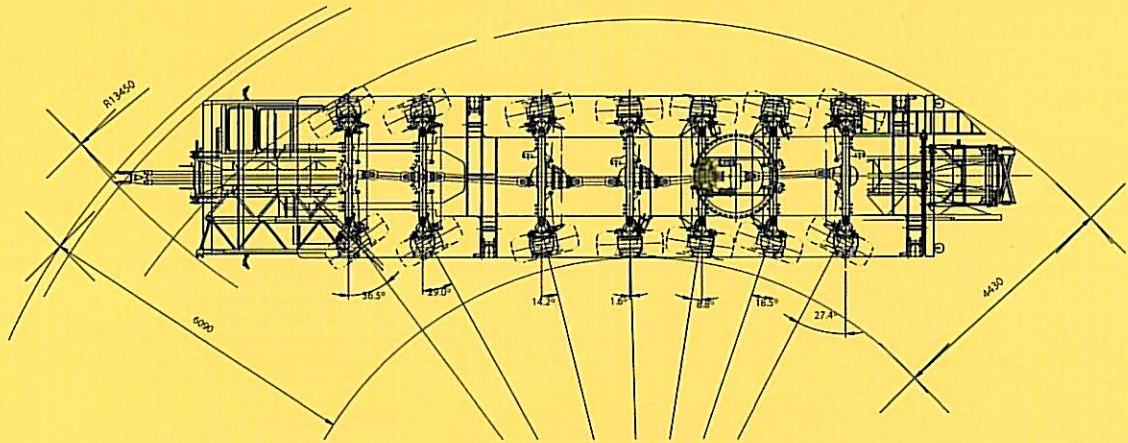
Options

Crane

- Air-conditioning for the crane cabin.

Truck

- A side-view camera system



- Axle 1 : Steer drive axle (end reduction $i=7,33$)
- Axle 2 : Steer axle
- Axle 3 : Steer drive axle (end reduction $i=7,29$)
- Axle 4 : Steer drive axle (end reduction $i=7,29$)
- Axle 5 : Steer axle
- Axle 6 : Steer axle
- Axle 7 : Steer drive axle (end reduction $i=7,29$)

- Tyres : 445/75 R22,5
- Suspension: hydro-pneumatic on all axles, stroke cyl. : 247 mm
- Max. speed carrier 12th gear (limited) : 82 km/h
- Min. speed carrier (diesel engine 1000 rpm) : 1,6 km/h
- Overall weight : 84.000 kg.

Changes subject to modifications

SPIERINGS

a new generation mobile cranes